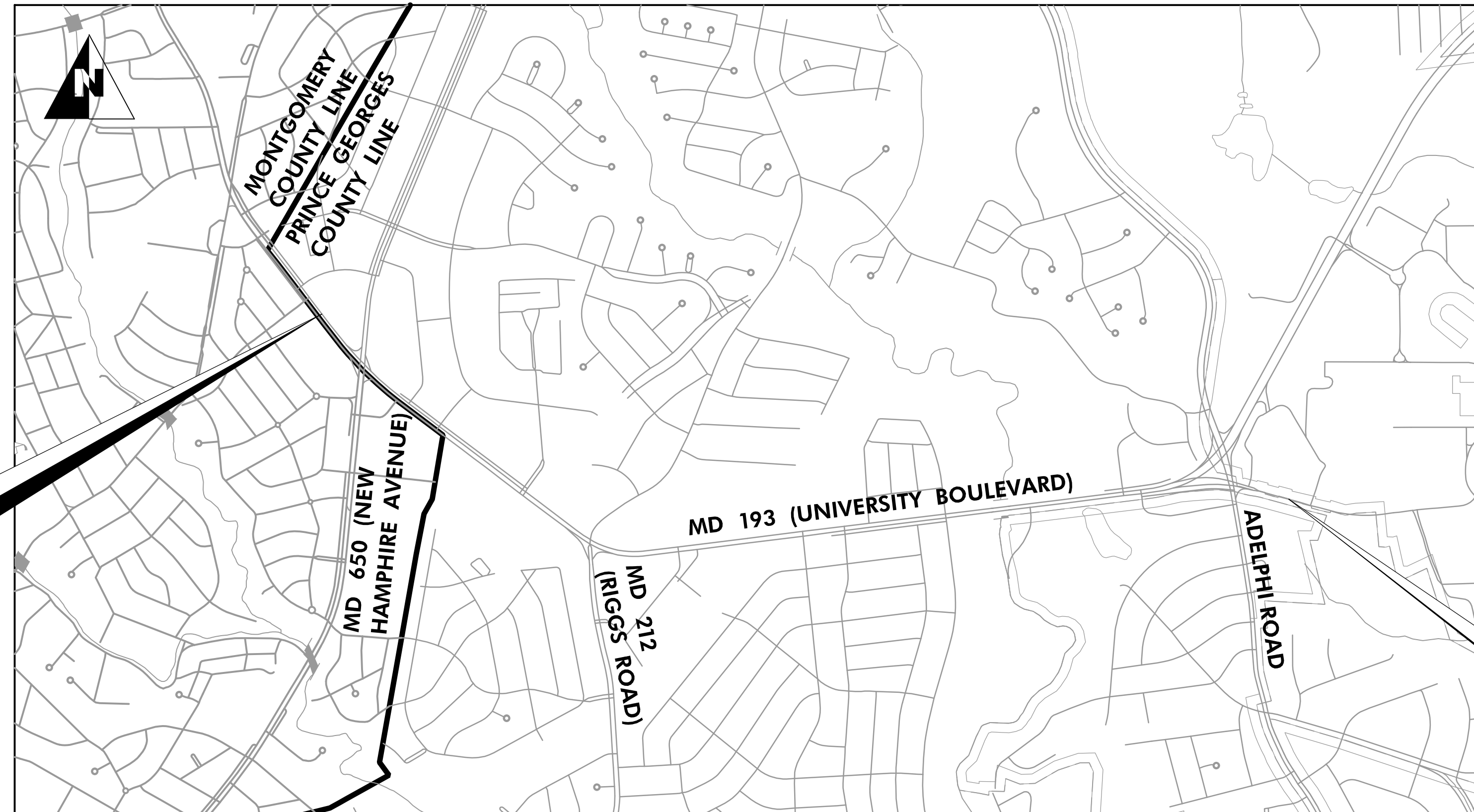


# NORTHERN GATEWAY SPACES PAMC PROJECT MD 193 (UNIVERSITY BOULEVARD) FROM TAKOMA LANGLEY STATION TO ADELPHI ROAD UMGC-UMD STATION

## INDEX OF SHEETS

- 1 TITLE SHEET
- 2-12 PLAN SHEETS



**LIMIT OF WORK**  
MD 193 (UNIVERSITY BOULEVARD)  
AT  
TAKOMA LANGLEY STATION

**LIMIT OF WORK**  
MD 193 (UNIVERSITY BOULEVARD)  
AT  
ADELPHI ROAD UMGC-UMD STATION

PRINCE GEORGES COUNTY

HORIZONTAL DATUM	NAD 83 /91
VERTICAL DATUM	NAVD 88

**LENGTH OF PROJECT:**  
MD RTE. 193 = 2.10 MILES

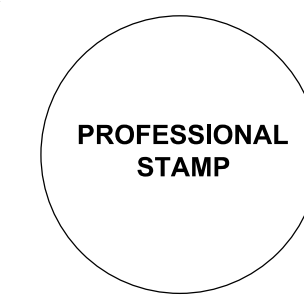
30% PRELIMINARY

7125 Ambassador Road, Suite 200  
Baltimore, Maryland 21244  
www.stvinc.com

DESIGN		
Landscape Architect	Date	Checked By:
K. MISNER	3/2021	S. YOUNG
Engineer	Date	Checked By:
K. MISNER	3/2021	S. YOUNG
Drawn by	Date	Checked By:

**Professional Certification.** I hereby certify that these documents were prepared or approved by me, and that I am a duly licensed professional engineer under the laws of the State of Maryland.

License No. 35321  
Expiration Date 01/06/2022



The Maryland-National Capital  
Park and Planning Commission  
Prince George's County Planning Department  
Community Planning Division  
www.mnccppc.org  
(301) 952-3646

REVIEW AND APPROVAL	
Project Manager	Date
Construction Manager	Date
Park Manager	Date

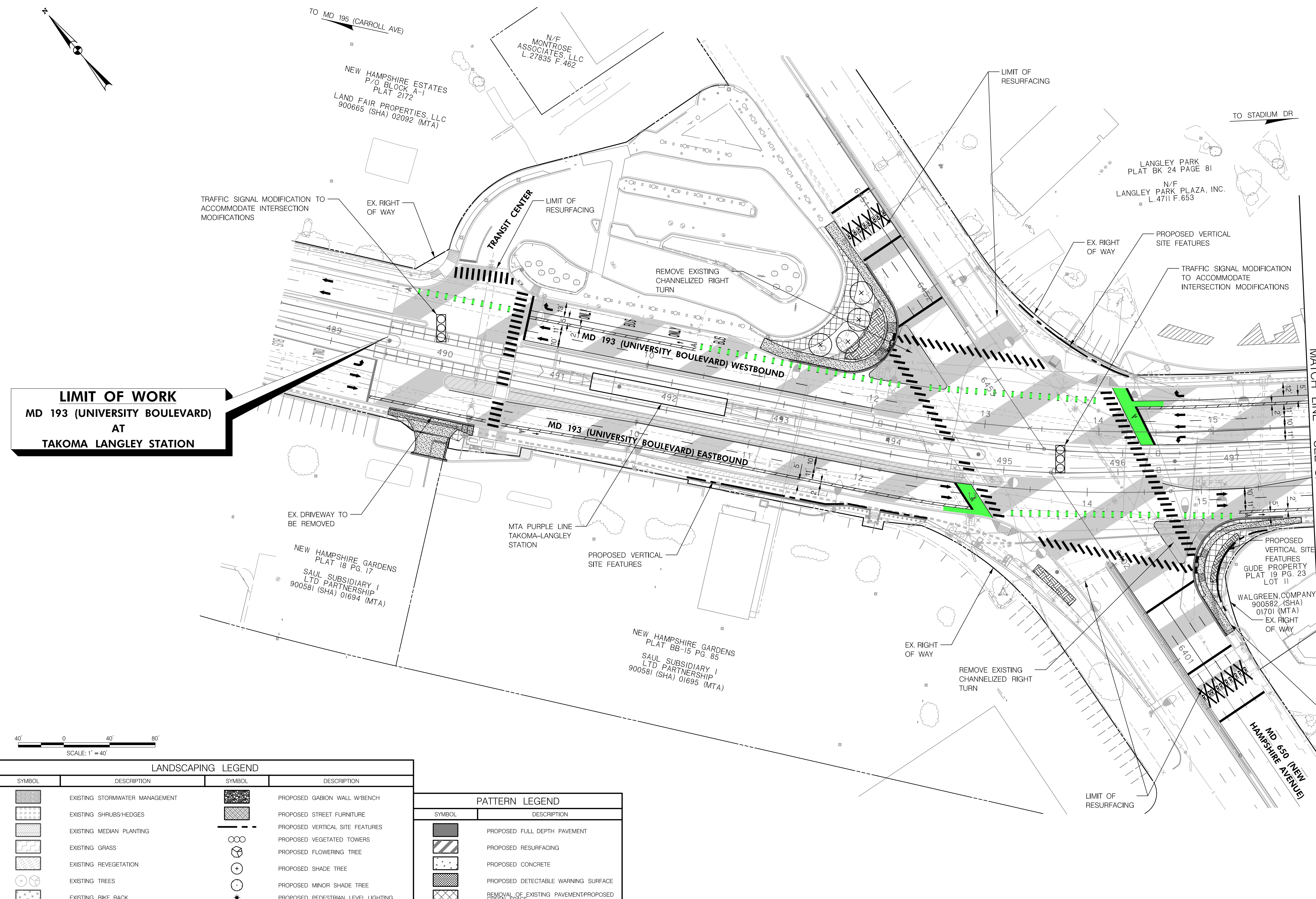
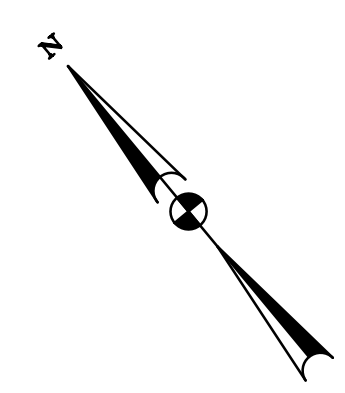
ISSUED FOR PROCUREMENT ON _____		
REVISIONS		
Rev. No.	Date	Description

**NORTHERN GATEWAY  
SPACES PAMC PROJECT**  
MD 193 (UNIVERSITY BOULEVARD)  
TAKOMA LANGLEY STATION TO ADELPHI  
ROAD UMGC-UMD STATION

DWG. #  
**TI-01**  
SHT. # 1 of 12  
TITLE SHEET

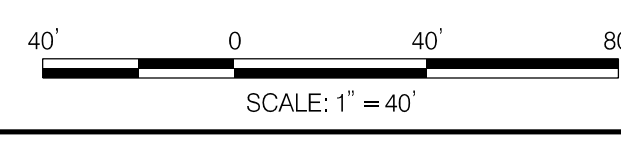
FINAL SCANNED: PLAN SCANNED: C10 PARK CODE: C10 Plotted By: Feldman, Aaron, 2/17/2016 3:28 PM, ----- C:\Users\Aaron.Feldman\Documents\Library\CAD\_library\Title\_blocks\Title\_block.dwg - Model

FINAL SCANNED: PLAN SCANNED: C10 PARK CODE: C10



**LIMIT OF WORK**  
**MD 193 (UNIVERSITY BOULEVARD)**  
**AT**  
**TAKOMA LANGLEY STATION**

MATCH LINE - SEE SHEET HD-02



**LANDSCAPING LEGEND**

SYMBOL	DESCRIPTION	SYMBOL	DESCRIPTION
[Pattern]	EXISTING STORMWATER MANAGEMENT	[Pattern]	PROPOSED GABION WALL W/BENCH
[Pattern]	EXISTING SHRUBS/HEDGES	[Pattern]	PROPOSED STREET FURNITURE
[Pattern]	EXISTING MEDIAN PLANTING	[Symbol]	PROPOSED VERTICAL SITE FEATURES
[Pattern]	EXISTING GRASS	[Symbol]	PROPOSED VEGETATED TOWERS
[Pattern]	EXISTING REVEGETATION	[Symbol]	PROPOSED FLOWERING TREE
[Symbol]	EXISTING TREES	[Symbol]	PROPOSED SHADE TREE
[Symbol]	EXISTING BIKE RACK	[Symbol]	PROPOSED MINOR SHADE TREE
		[Symbol]	PROPOSED PEDESTRIAN LEVEL LIGHTING

**PATTERN LEGEND**

SYMBOL	DESCRIPTION
[Pattern]	PROPOSED FULL DEPTH PAVEMENT
[Pattern]	PROPOSED RESURFACING
[Pattern]	PROPOSED CONCRETE
[Pattern]	PROPOSED DETECTABLE WARNING SURFACE
[Pattern]	REMOVAL OF EXISTING PAVEMENT/PROPOSED GREEN SPACE

TREE SUMMARY	
QUANTITY	TREE TYPE
4	NORTH SIDE SHADE
0	SOUTH SIDE FLOWERING (25')
4	TOTAL

30% PRELIMINARY

7125 Ambassador Road, Suite 200  
 Baltimore, Maryland 21244  
 www.stvinc.com

DESIGN		
Landscape Architect	Date	Checked By:
Architect	Date	Checked By:
K. MISNER	3/2021	S. YOUNG
Engineer	Date	Checked By:
K. MISNER	3/2021	S. YOUNG
Drawn by	Date	Checked By:

**Professional Certification.** I hereby certify that these documents were prepared or approved by me, and that I am a duly licensed professional engineer under the laws of the State of Maryland.

License No. 35321  
 Expiration Date 01/06/2022

The Maryland-National Capital Park and Planning Commission  
 Prince George's County Planning Department  
 Community Planning Division  
 www.mnccppc.org  
 (301) 952-3646

REVIEW AND APPROVAL	
Project Manager	Date
Construction Manager	Date
Park Manager	Date

ISSUED FOR PROCUREMENT ON _____		
REVISIONS		
Rev. No.	Date	Description

**NORTHERN GATEWAY SPACES PAMC PROJECT**  
**MD 193 (UNIVERSITY BOULEVARD)**  
**TAKOMA LANGLEY STATION TO ADELPHI ROAD UMGC-UMD STATION**

DWG. # **PS-01**  
 SHT. # 2 of 12  
**PLAN SHEET**

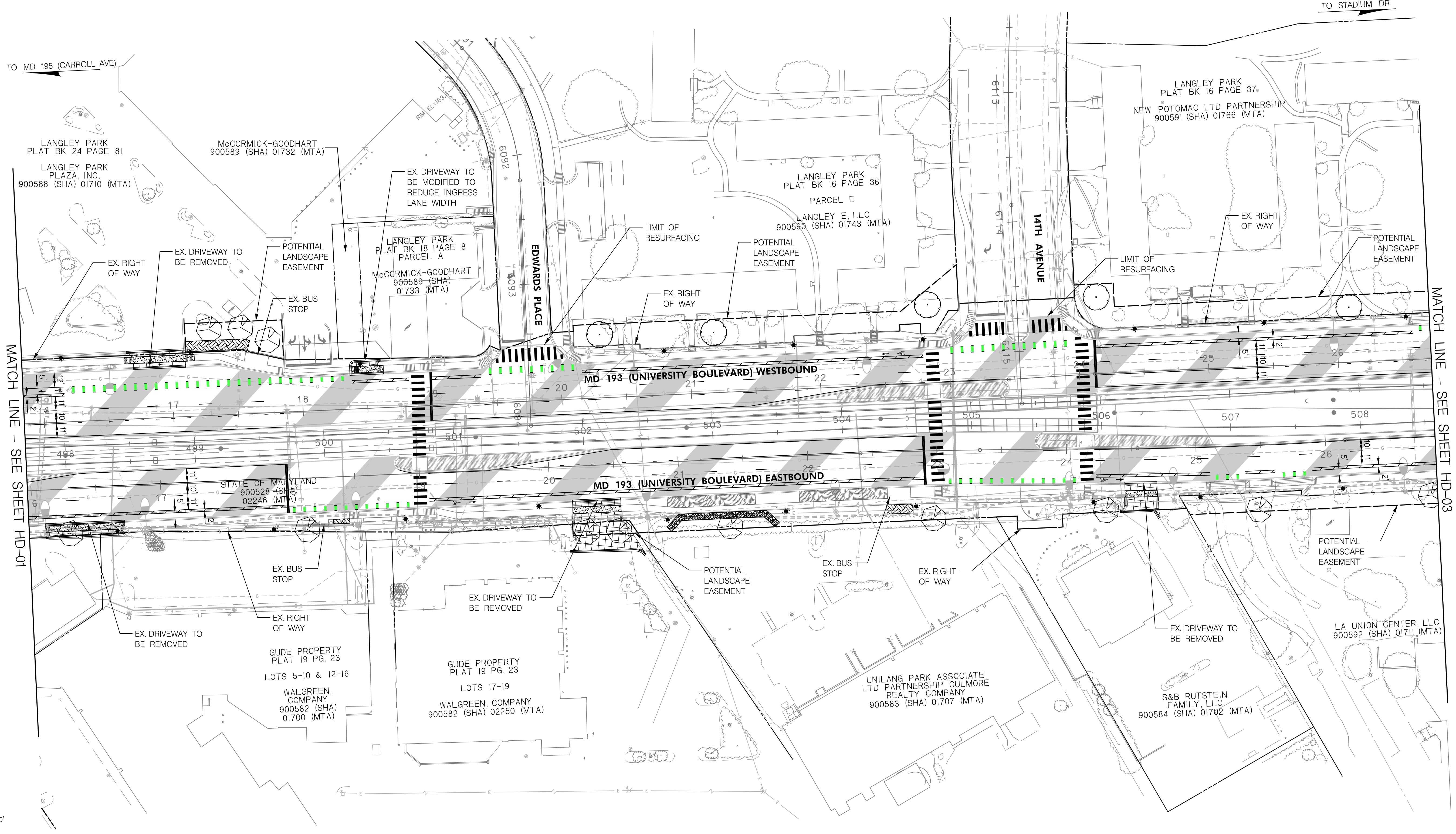
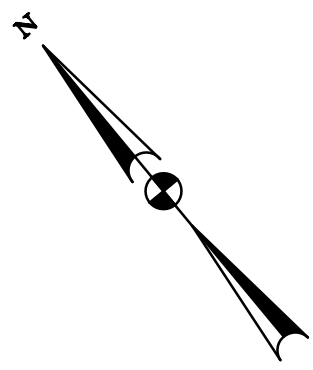
FINAL SCANNED:

PLAN SCANNED:

PARK CODE: C10

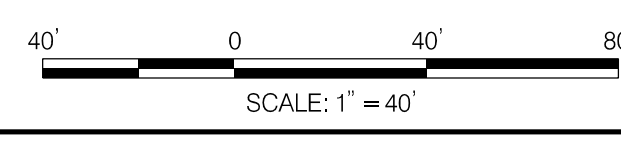
PLotted By: Feldman, Aaron, 2/17/2016 3:28 PM, -----

C:\Users\Aaron.Feldman\Documents\Library\CAD\_Library\Title\_Blocks\Title\_Blocks.dwg



MATCH LINE - SEE SHEET HD-01

MATCH LINE - SEE SHEET HD-03



LANDSCAPING LEGEND

SYMBOL	DESCRIPTION	SYMBOL	DESCRIPTION
[Symbol]	EXISTING STORMWATER MANAGEMENT	[Symbol]	PROPOSED GABION WALL W/BENCH
[Symbol]	EXISTING SHRUBS/HEDGES	[Symbol]	PROPOSED STREET FURNITURE
[Symbol]	EXISTING MEDIAN PLANTING	[Symbol]	PROPOSED VERTICAL SITE FEATURES
[Symbol]	EXISTING GRASS	[Symbol]	PROPOSED VEGETATED TOWERS
[Symbol]	EXISTING REVEGETATION	[Symbol]	PROPOSED FLOWERING TREE
[Symbol]	EXISTING TREES	[Symbol]	PROPOSED SHADE TREE
[Symbol]	EXISTING BIKE RACK	[Symbol]	PROPOSED MINOR SHADE TREE
		[Symbol]	PROPOSED PEDESTRIAN LEVEL LIGHTING

PATTERN LEGEND

SYMBOL	DESCRIPTION
[Symbol]	PROPOSED FULL DEPTH PAVEMENT
[Symbol]	PROPOSED RESURFACING
[Symbol]	PROPOSED CONCRETE
[Symbol]	PROPOSED DETECTABLE WARNING SURFACE
[Symbol]	REMOVAL OF EXISTING PAVEMENT/PROPOSED GREEN SPACE

TREE SUMMARY

QUANTITY	TREE TYPE
NORTH SIDE	
3	FLOWERING (25')
5	MINOR SHADE
SOUTH SIDE	
4	FLOWERING (25')
5	FLOWERING (25'-40')
17	TOTAL

30% PRELIMINARY

**STV** 100 Years  
 7125 Ambassador Road, Suite 200  
 Baltimore, Maryland 21244  
 www.stvinc.com

DESIGN		
Landscape Architect	Date	Checked By:
Architect	Date	Checked By:
K. MISNER	3/2021	S. YOUNG
Engineer	Date	Checked By:
K. MISNER	3/2021	S. YOUNG
Drawn by	Date	Checked By:

**Professional Certification.** I hereby certify that these documents were prepared or approved by me, and that I am a duly licensed professional engineer under the laws of the State of Maryland.

License No. 35321  
 Expiration Date 01/06/2022

**The Maryland-National Capital Park and Planning Commission**  
 Prince George's County Planning Department  
 Community Planning Division  
 www.mnccppc.org  
 (301) 952-3646

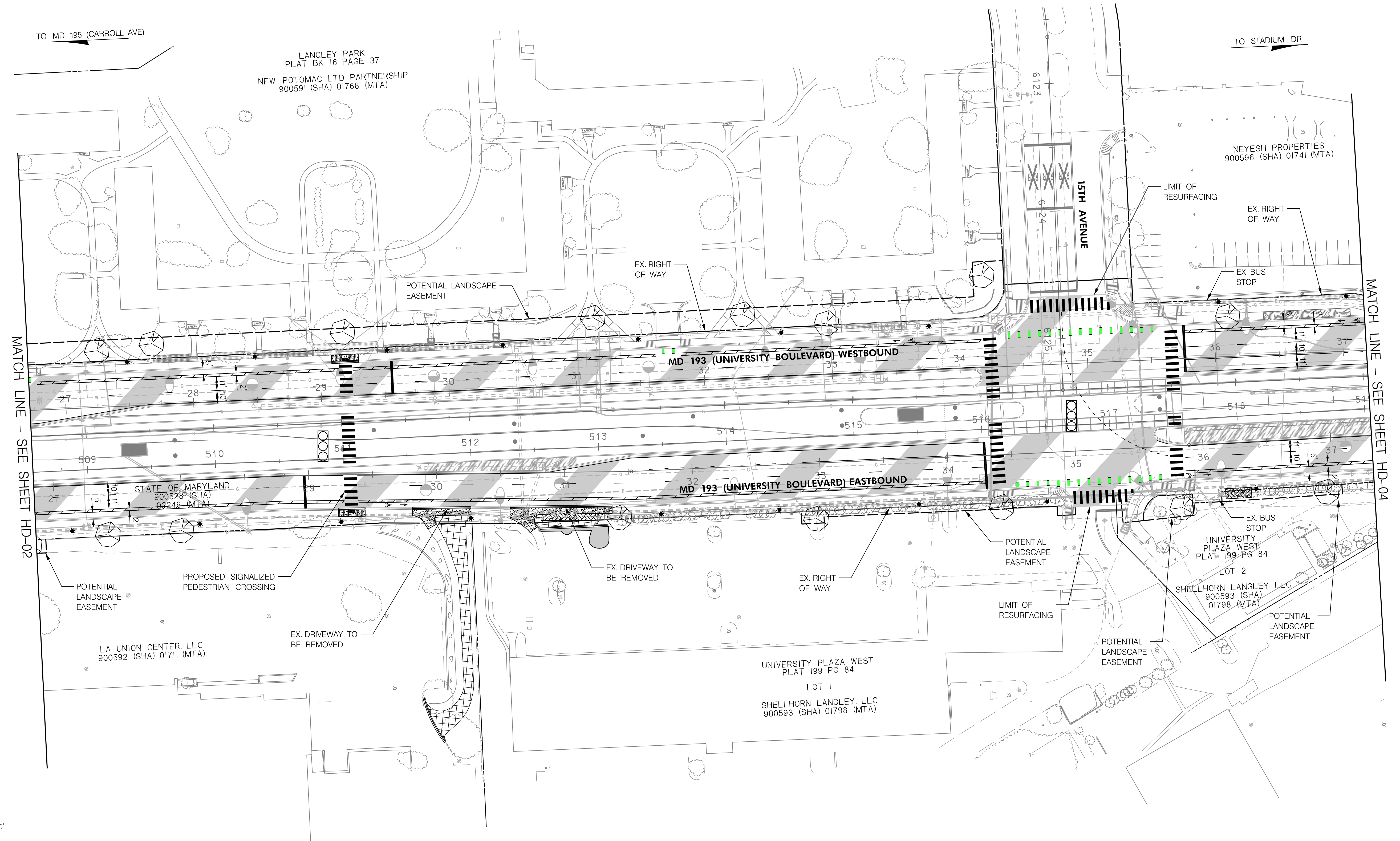
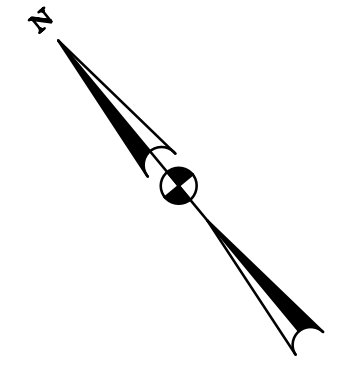
REVIEW AND APPROVAL	
Project Manager	Date
Construction Manager	Date
Park Manager	Date

ISSUED FOR PROCUREMENT ON _____		
REVISIONS		
Rev. No.	Date	Description

**NORTHERN GATEWAY SPACES PAMC PROJECT**  
 MD 193 (UNIVERSITY BOULEVARD)  
 TAKOMA LANGLEY STATION TO ADELPHI ROAD UMGC-UMD STATION

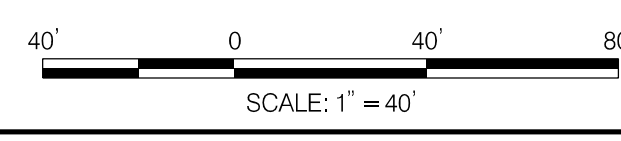
DWG. # **PS-02**  
 SHT. # 3 of 12  
 PLAN SHEET

FINAL SCANNED: PARK CODE: C10 PLAN SCANNED: 2/17/2016 3:28 PM



MATCH LINE - SEE SHEET HD-02

MATCH LINE - SEE SHEET HD-04



**LANDSCAPING LEGEND**

SYMBOL	DESCRIPTION	SYMBOL	DESCRIPTION
	EXISTING STORMWATER MANAGEMENT		PROPOSED GATION WALL W/BENCH
	EXISTING SHRUBS/HEDGES		PROPOSED STREET FURNITURE
	EXISTING MEDIAN PLANTING		PROPOSED VERTICAL SITE FEATURES
	EXISTING GRASS		PROPOSED VEGETATED TOWERS
	EXISTING REVEGETATION		PROPOSED FLOWERING TREE
	EXISTING TREES		PROPOSED SHADE TREE
	EXISTING BIKE RACK		PROPOSED MINOR SHADE TREE
			PROPOSED PEDESTRIAN LEVEL LIGHTING

**PATTERN LEGEND**

SYMBOL	DESCRIPTION
	PROPOSED FULL DEPTH PAVEMENT
	PROPOSED RESURFACING
	PROPOSED CONCRETE
	PROPOSED DETECTABLE WARNING SURFACE
	REMOVAL OF EXISTING PAVEMENT/PROPOSED GREEN SPACE

TREE SUMMARY	
QUANTITY	TREE TYPE
<b>NORTH SIDE</b>	
8	FLOWERING (25')
<b>SOUTH SIDE</b>	
7	FLOWERING (25')
15	TOTAL

30% PRELIMINARY

**STV 100 Years**  
 7125 Ambassador Road, Suite 200  
 Baltimore, Maryland 21244  
 www.stvinc.com

DESIGN		
Landscape Architect	Date	Checked By:
K. MISNER	3/2021	S. YOUNG
Engineer	Date	Checked By:
K. MISNER	3/2021	S. YOUNG
Drawn by	Date	Checked By:

**Professional Certification.** I hereby certify that these documents were prepared or approved by me, and that I am a duly licensed professional engineer under the laws of the State of Maryland.  
 License No. 35321  
 Expiration Date 01/06/2022

**The Maryland-National Capital Park and Planning Commission**  
 Prince George's County Planning Department  
 Community Planning Division  
 www.mncppc.org  
 (301) 952-3646

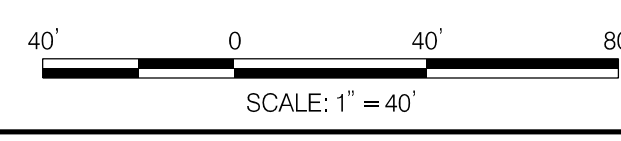
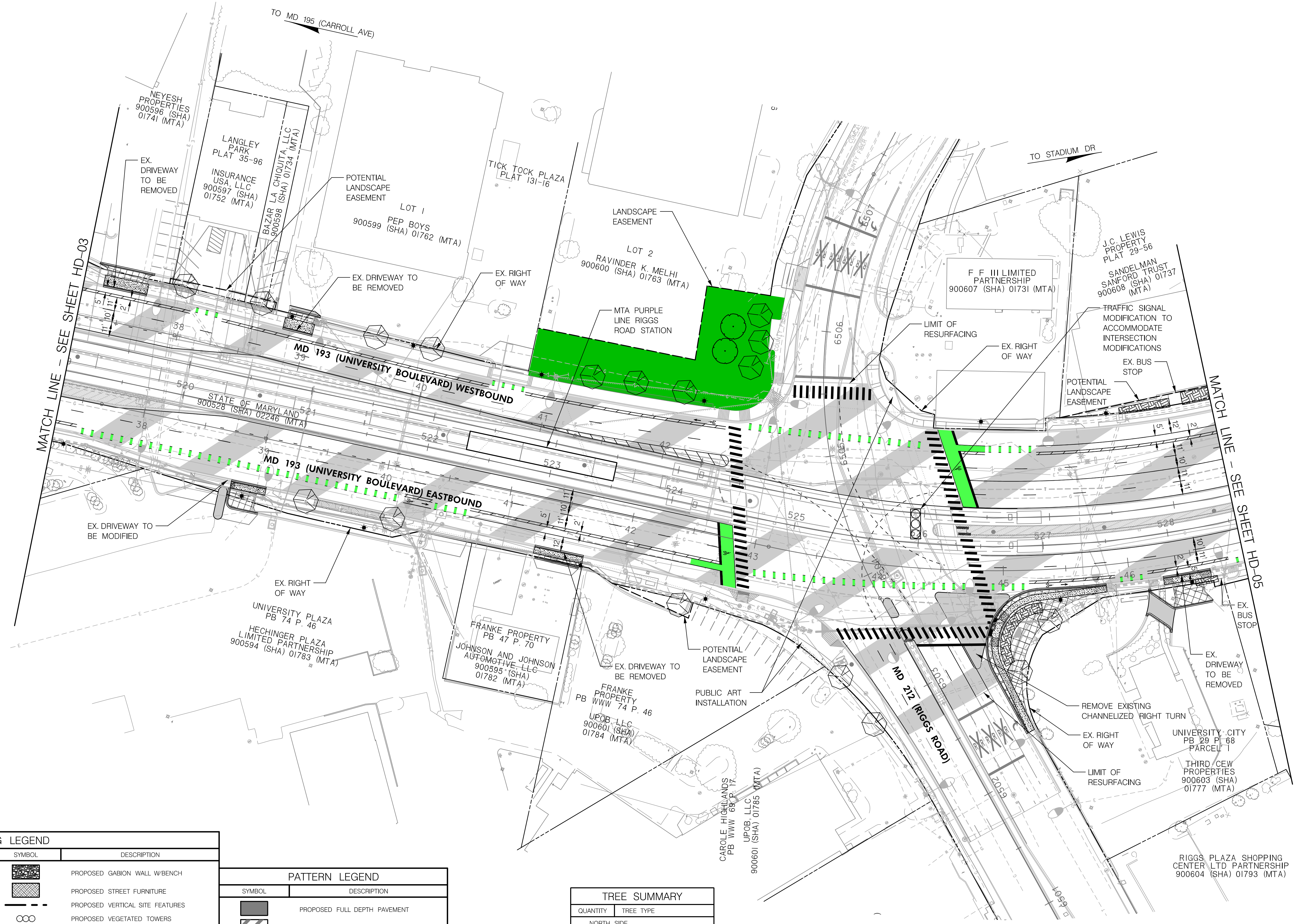
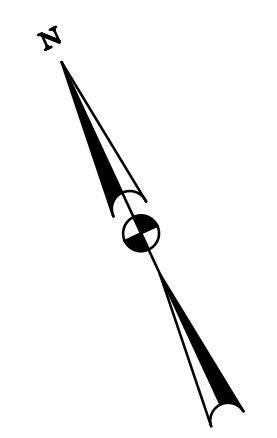
REVIEW AND APPROVAL	
Project Manager	Date
Construction Manager	Date
Park Manager	Date

ISSUED FOR PROCUREMENT ON		
REVISIONS		
Rev. No.	Date	Description

**NORTHERN GATEWAY SPACES PAMC PROJECT**  
**MD 193 (UNIVERSITY BOULEVARD)**  
 TAKOMA LANGLEY STATION TO ADELPHI ROAD UMGC-UMD STATION

DWG. # **PS-03**  
 SHT. # 4 of 12  
 PLAN SHEET

FINAL SCANNED: PLAN SCANNED: C10 PARK CODE: C10



**LANDSCAPING LEGEND**

SYMBOL	DESCRIPTION	SYMBOL	DESCRIPTION
	EXISTING STORMWATER MANAGEMENT		PROPOSED GATION WALL W/BENCH
	EXISTING SHRUBS/HEDGES		PROPOSED STREET FURNITURE
	EXISTING MEDIAN PLANTING		PROPOSED VERTICAL SITE FEATURES
	EXISTING GRASS		PROPOSED VEGETATED TOWERS
	EXISTING REVEGETATION		PROPOSED FLOWERING TREE
	EXISTING TREES		PROPOSED SHADE TREE
	EXISTING BIKE RACK		PROPOSED MINOR SHADE TREE
			PROPOSED PEDESTRIAN LEVEL LIGHTING

**PATTERN LEGEND**

SYMBOL	DESCRIPTION
	PROPOSED FULL DEPTH PAVEMENT
	PROPOSED RESURFACING
	PROPOSED CONCRETE
	PROPOSED DETECTABLE WARNING SURFACE
	REMOVAL OF EXISTING PAVEMENT/PROPOSED GREEN SPACE

**TREE SUMMARY**

QUANTITY	TREE TYPE
<b>NORTH SIDE</b>	
10	FLOWERING (25')
2	MINOR SHADE
<b>SOUTH SIDE</b>	
7	FLOWERING (25')
19	TOTAL

30% PRELIMINARY

7125 Ambassador Road, Suite 200  
Baltimore, Maryland 21244  
www.stvinc.com

DESIGN		
Landscape Architect	Date	Checked By:
K. MISNER	3/2021	S. YOUNG
Engineer	Date	Checked By:
K. MISNER	3/2021	S. YOUNG
Drawn by	Date	Checked By:

**Professional Certification.** I hereby certify that these documents were prepared or approved by me, and that I am a duly licensed professional engineer under the laws of the State of Maryland.

License No. 35321  
Expiration Date 01/06/2022



**The Maryland-National Capital Park and Planning Commission**  
Prince George's County Planning Department  
Community Planning Division  
www.mnppc.org  
(301) 952-3646

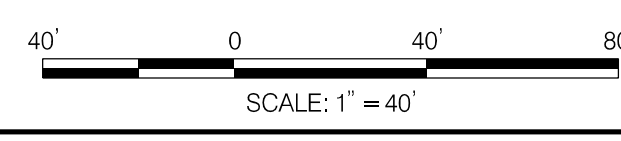
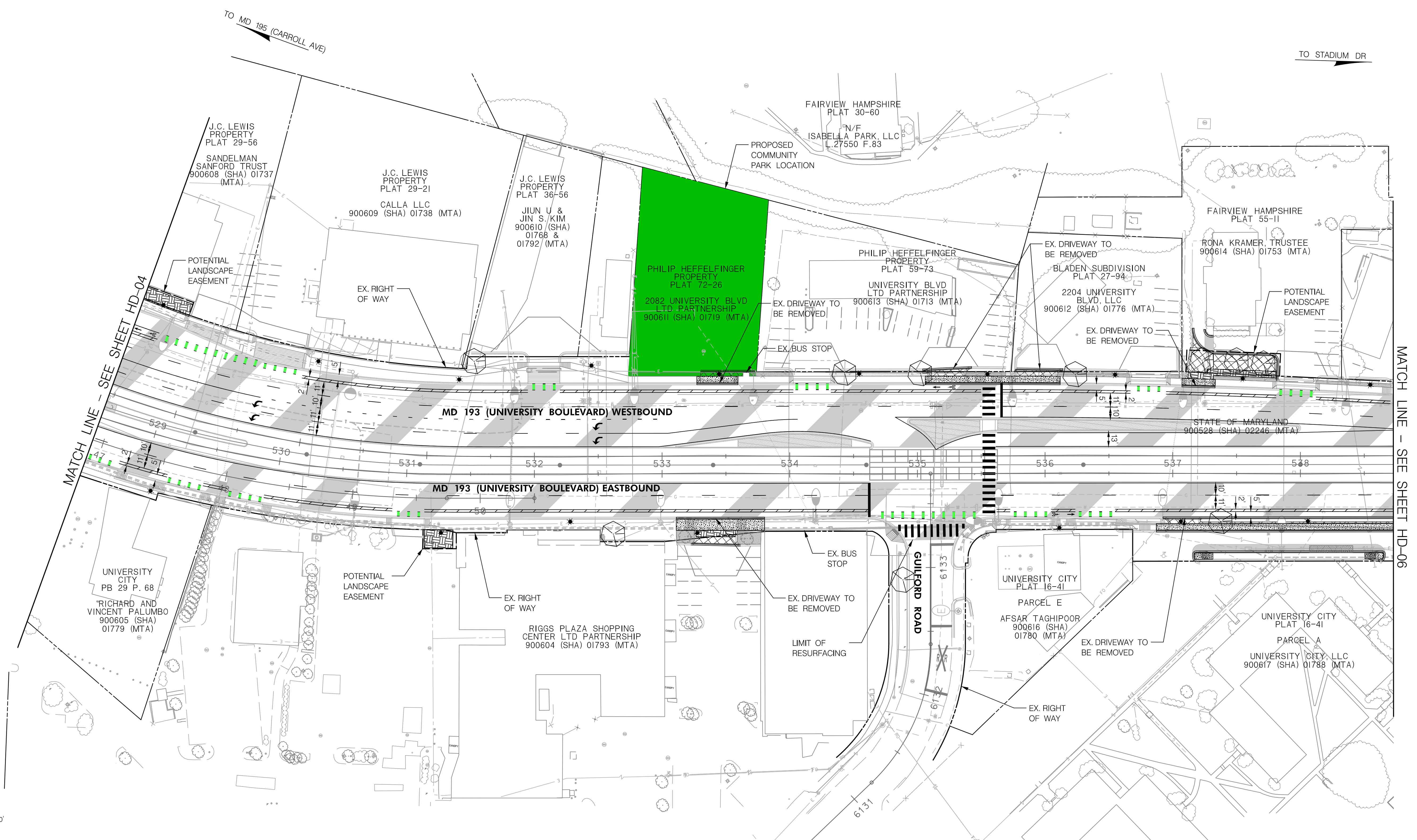
REVIEW AND APPROVAL	
Project Manager	Date
Construction Manager	Date
Park Manager	Date

ISSUED FOR PROCUREMENT ON		
REVISIONS		
Rev. No.	Date	Description

**NORTHERN GATEWAY SPACES PAMC PROJECT**  
MD 193 (UNIVERSITY BOULEVARD)  
TAKOMA LANGLEY STATION TO ADELPHI ROAD UMGC-UMD STATION

DWG. # **PS-04**  
SHT. # 5 of 12  
PLAN SHEET

FINAL SCANNED: PLAN SCANNED: C10 PARK CODE: C10



**LANDSCAPING LEGEND**

SYMBOL	DESCRIPTION	SYMBOL	DESCRIPTION
	EXISTING STORMWATER MANAGEMENT		PROPOSED GATION WALL W/BENCH
	EXISTING SHRUBS/HEDGES		PROPOSED STREET FURNITURE
	EXISTING MEDIAN PLANTING		PROPOSED VERTICAL SITE FEATURES
	EXISTING GRASS		PROPOSED VEGETATED TOWERS
	EXISTING REVEGETATION		PROPOSED FLOWERING TREE
	EXISTING TREES		PROPOSED SHADE TREE
	EXISTING BIKE RACK		PROPOSED MINOR SHADE TREE
			PROPOSED PEDESTRIAN LEVEL LIGHTING

**PATTERN LEGEND**

SYMBOL	DESCRIPTION
	PROPOSED FULL DEPTH PAVEMENT
	PROPOSED RESURFACING
	PROPOSED CONCRETE
	PROPOSED DETECTABLE WARNING SURFACE
	REMOVAL OF EXISTING PAVEMENT/PROPOSED GREEN SPACE

TREE SUMMARY	
QUANTITY	TREE TYPE
7	NORTH SIDE FLOWERING (25')
3	SOUTH SIDE FLOWERING (25')
10	TOTAL

30% PRELIMINARY

7125 Ambassador Road, Suite 200  
 Baltimore, Maryland 21244  
 www.stvinc.com

DESIGN		
Landscape Architect	Date	Checked By:
K. MISNER	3/2021	S. YOUNG
Engineer	Date	Checked By:
K. MISNER	3/2021	S. YOUNG
Drawn by	Date	Checked By:

**Professional Certification.** I hereby certify that these documents were prepared or approved by me, and that I am a duly licensed professional engineer under the laws of the State of Maryland.  
 License No. 35321  
 Expiration Date 01/06/2022

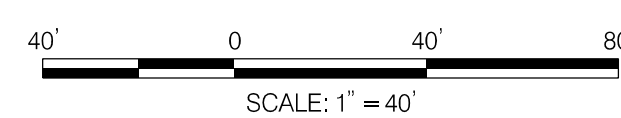
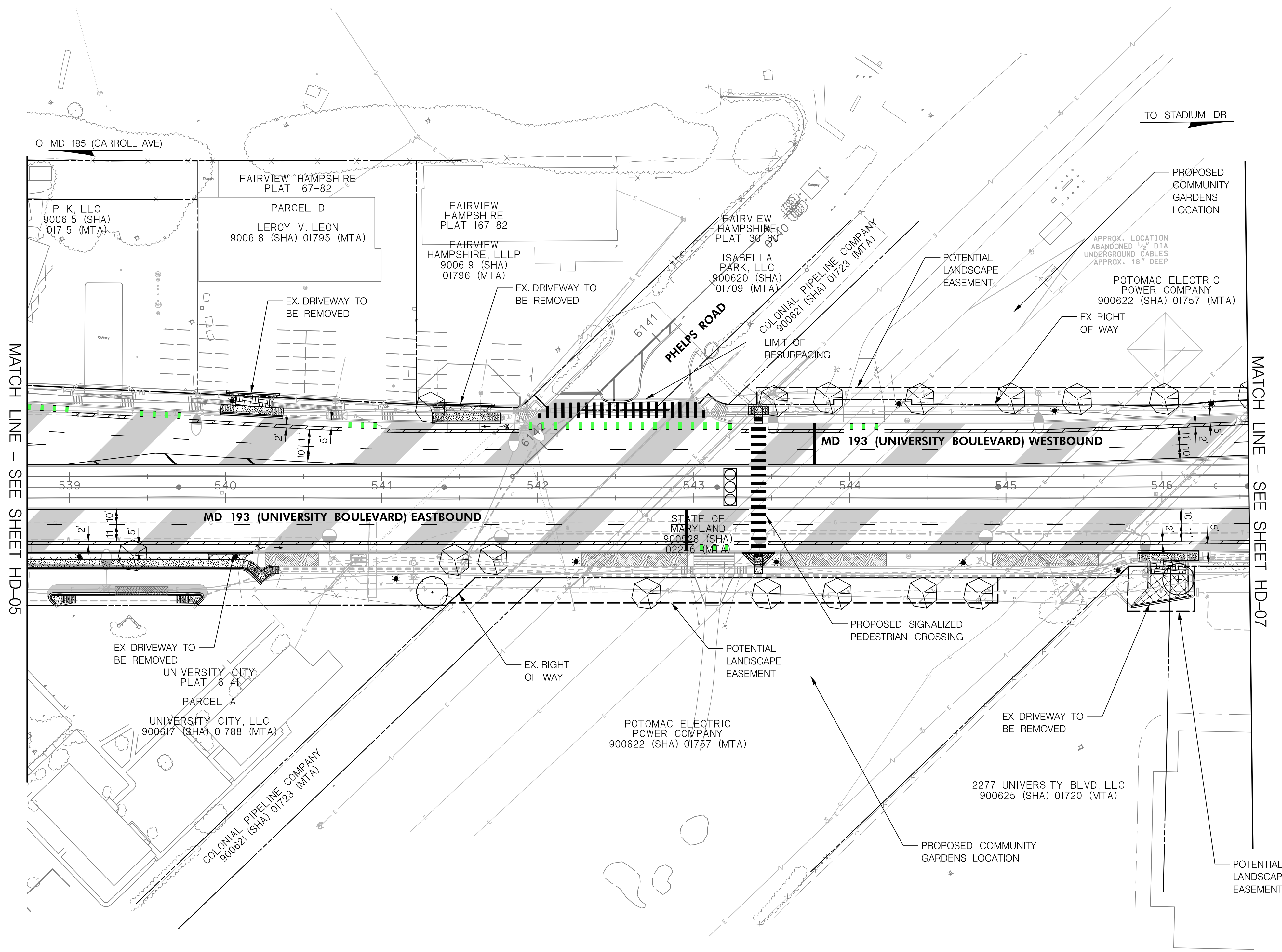
The Maryland-National Capital  
 Park and Planning Commission  
 Prince George's County Planning Department  
 Community Planning Division  
 www.mnppc.org  
 (301) 952-3646

REVIEW AND APPROVAL	
Project Manager	Date
Construction Manager	Date
Park Manager	Date

ISSUED FOR PROCUREMENT ON		
REVISIONS		
Rev. No.	Date	Description

**NORTHERN GATEWAY  
 SPACES PAMC PROJECT**  
 MD 193 (UNIVERSITY BOULEVARD)  
 TAKOMA LANGLEY STATION TO ADELPHI  
 ROAD UMGC-UMD STATION

DWG. #  
**PS-05**  
 SHT. # 6 of 12  
**PLAN SHEET**



LANDSCAPING LEGEND

SYMBOL	DESCRIPTION	SYMBOL	DESCRIPTION
[Symbol]	EXISTING STORMWATER MANAGEMENT	[Symbol]	PROPOSED GABION WALL W/BENCH
[Symbol]	EXISTING SHRUBS/HEDGES	[Symbol]	PROPOSED STREET FURNITURE
[Symbol]	EXISTING MEDIAN PLANTING	[Symbol]	PROPOSED VERTICAL SITE FEATURES
[Symbol]	EXISTING GRASS	[Symbol]	PROPOSED VEGETATED TOWERS
[Symbol]	EXISTING REVEGETATION	[Symbol]	PROPOSED FLOWERING TREE
[Symbol]	EXISTING TREES	[Symbol]	PROPOSED SHADE TREE
[Symbol]	EXISTING BIKE RACK	[Symbol]	PROPOSED MINOR SHADE TREE
[Symbol]		[Symbol]	PROPOSED PEDESTRIAN LEVEL LIGHTING

PATTERN LEGEND

SYMBOL	DESCRIPTION
[Symbol]	PROPOSED FULL DEPTH PAVEMENT
[Symbol]	PROPOSED RESURFACING
[Symbol]	PROPOSED CONCRETE
[Symbol]	PROPOSED DETECTABLE WARNING SURFACE
[Symbol]	REMOVAL OF EXISTING PAVEMENT/PROPOSED GREEN SPACE

TREE SUMMARY	
QUANTITY	TREE TYPE
NORTH SIDE	
7	FLOWERING (25')
SOUTH SIDE	
8	FLOWERING (25')
1	MINOR SHADE
1	SHADE
17	TOTAL

30% PRELIMINARY

7125 Ambassador Road, Suite 200  
Baltimore, Maryland 21244  
www.stvinc.com

DESIGN		
Landscape Architect	Date	Checked By:
Architect	Date	Checked By:
K. MISNER	3/2021	S. YOUNG
Engineer	Date	Checked By:
K. MISNER	3/2021	S. YOUNG
Drawn by	Date	Checked By:

**Professional Certification.** I hereby certify that these documents were prepared or approved by me, and that I am a duly licensed professional engineer under the laws of the State of Maryland.

License No. 35321  
Expiration Date 01/06/2022

The Maryland-National Capital Park and Planning Commission  
Prince George's County Planning Department  
Community Planning Division  
www.mnccppc.org  
(301) 952-3646

REVIEW AND APPROVAL	
Project Manager	Date
Construction Manager	Date
Park Manager	Date

ISSUED FOR PROCUREMENT ON _____		
REVISIONS		
Rev. No.	Date	Description

**NORTHERN GATEWAY SPACES PAMC PROJECT**  
MD 193 (UNIVERSITY BOULEVARD)  
TAKOMA LANGLEY STATION TO ADELPHI ROAD UMGC-UMD STATION

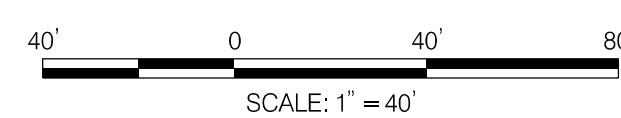
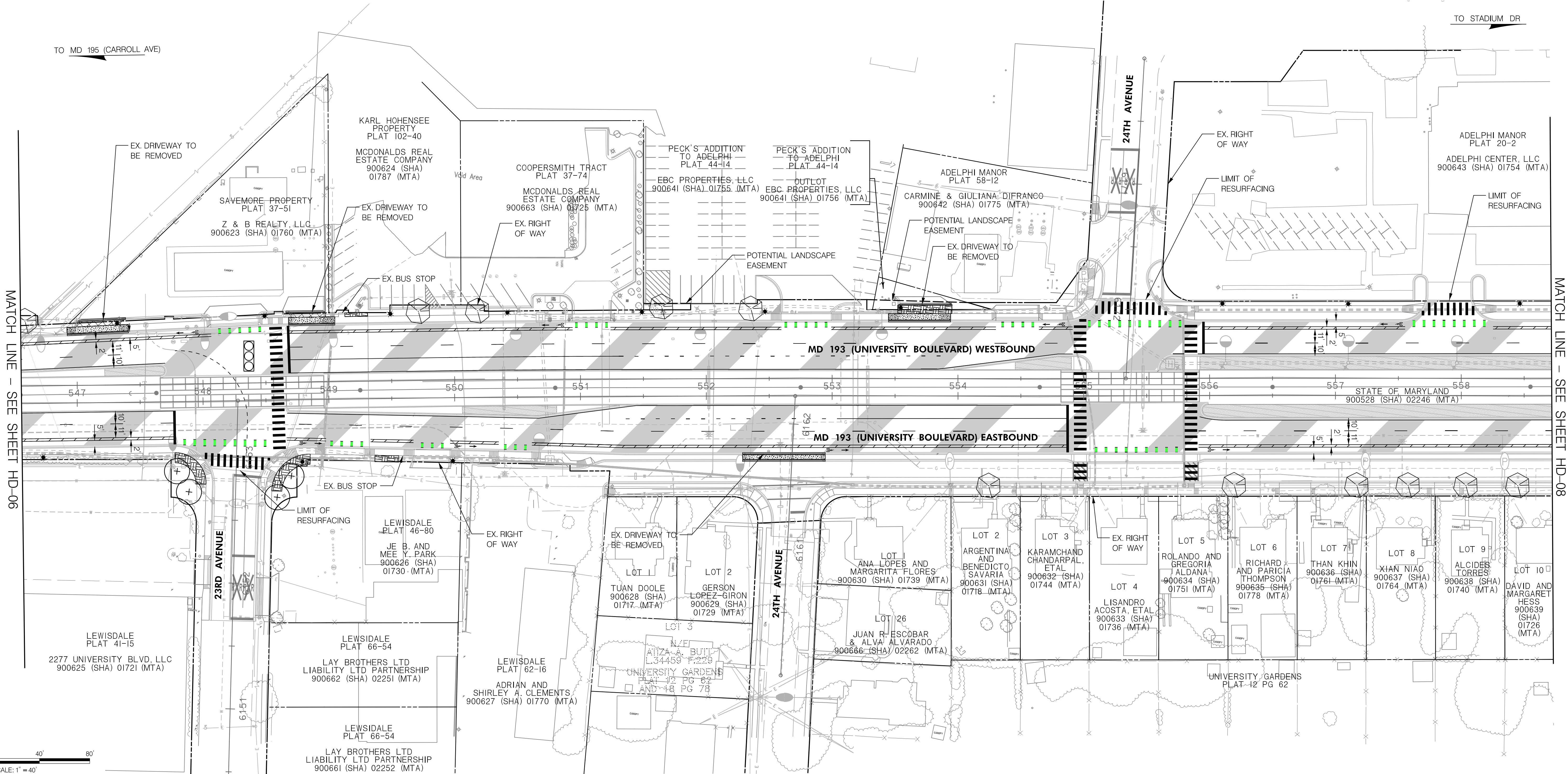
DWG. # **PS-06**  
SHT. # 7 of 12  
PLAN SHEET

FINAL SCANNED:

PLAN SCANNED:

PARK CODE: C10

Plotted By: Feldman, Aaron, 2/17/2016 3:28 PM, -----  
C:\Users\Aaron.Feldman\Documents\Library\CAD Library\Title Blocks\Modul



**LANDSCAPING LEGEND**

SYMBOL	DESCRIPTION	SYMBOL	DESCRIPTION
[Symbol]	EXISTING STORMWATER MANAGEMENT	[Symbol]	PROPOSED GABION WALL W/BENCH
[Symbol]	EXISTING SHRUBS/HEDGES	[Symbol]	PROPOSED STREET FURNITURE
[Symbol]	EXISTING MEDIAN PLANTING	[Symbol]	PROPOSED VERTICAL SITE FEATURES
[Symbol]	EXISTING GRASS	[Symbol]	PROPOSED VEGETATED TOWERS
[Symbol]	EXISTING REVEGETATION	[Symbol]	PROPOSED FLOWERING TREE
[Symbol]	EXISTING TREES	[Symbol]	PROPOSED SHADE TREE
[Symbol]	EXISTING BIKE RACK	[Symbol]	PROPOSED MINOR SHADE TREE
		[Symbol]	PROPOSED PEDESTRIAN LEVEL LIGHTING

**PATTERN LEGEND**

SYMBOL	DESCRIPTION
[Symbol]	PROPOSED FULL DEPTH PAVEMENT
[Symbol]	PROPOSED RESURFACING
[Symbol]	PROPOSED CONCRETE
[Symbol]	PROPOSED DETECTABLE WARNING SURFACE
[Symbol]	REMOVAL OF EXISTING PAVEMENT/PROPOSED GREEN SPACE

**TREE SUMMARY**

QUANTITY	TREE TYPE
<b>NORTH SIDE</b>	
5	FLOWERING (25')
<b>SOUTH SIDE</b>	
6	FLOWERING (25')
4	SHADE
15	TOTAL

30% PRELIMINARY

7125 Ambassador Road, Suite 200  
Baltimore, Maryland 21244  
www.stvinc.com

DESIGN		
Landscape Architect	Date	Checked By:
K. MISNER	3/2021	S. YOUNG
Engineer	Date	Checked By:
K. MISNER	3/2021	S. YOUNG
Drawn by	Date	Checked By:

**Professional Certification.** I hereby certify that these documents were prepared or approved by me, and that I am a duly licensed professional engineer under the laws of the State of Maryland.

License No. 35321  
Expiration Date 01/06/2022

The Maryland-National Capital Park and Planning Commission  
Prince George's County Planning Department  
Community Planning Division  
www.mnppc.org  
(301) 952-3646

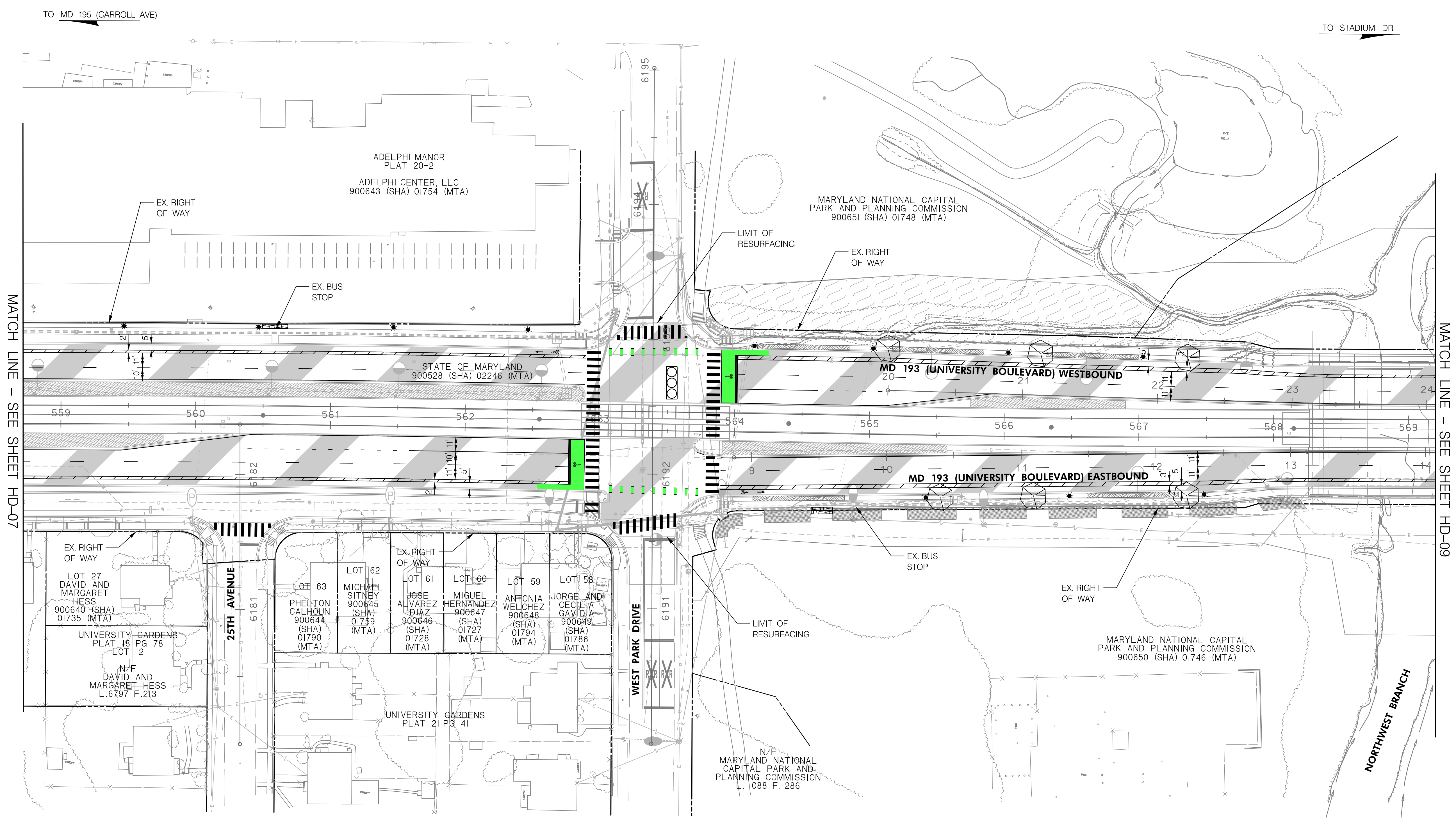
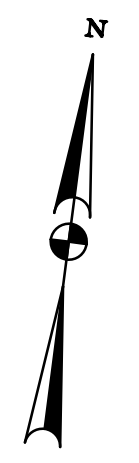
REVIEW AND APPROVAL	
Project Manager	Date
Construction Manager	Date
Park Manager	Date

ISSUED FOR PROCUREMENT ON		
REVISIONS		
Rev. No.	Date	Description

**NORTHERN GATEWAY SPACES PAMC PROJECT**  
MD 193 (UNIVERSITY BOULEVARD)  
TAKOMA LANGLEY STATION TO ADELPHI ROAD UMGC-UMD STATION

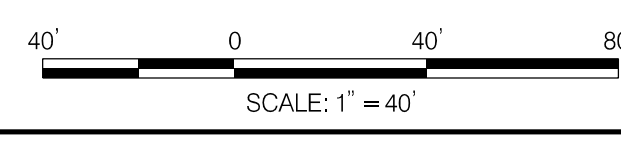
DWG. # **PS-07**  
SHT. # 8 of 12  
PLAN SHEET





MATCH LINE - SEE SHEET HD-07

MATCH LINE - SEE SHEET HD-09



LANDSCAPING LEGEND

SYMBOL	DESCRIPTION	SYMBOL	DESCRIPTION
[Symbol]	EXISTING STORMWATER MANAGEMENT	[Symbol]	PROPOSED GABION WALL W/BENCH
[Symbol]	EXISTING SHRUBS/HEDGES	[Symbol]	PROPOSED STREET FURNITURE
[Symbol]	EXISTING MEDIAN PLANTING	[Symbol]	PROPOSED VERTICAL SITE FEATURES
[Symbol]	EXISTING GRASS	[Symbol]	PROPOSED VEGETATED TOWERS
[Symbol]	EXISTING REVEGETATION	[Symbol]	PROPOSED FLOWERING TREE
[Symbol]	EXISTING TREES	[Symbol]	PROPOSED SHADE TREE
[Symbol]	EXISTING BIKE RACK	[Symbol]	PROPOSED MINOR SHADE TREE
		[Symbol]	PROPOSED PEDESTRIAN LEVEL LIGHTING

PATTERN LEGEND

SYMBOL	DESCRIPTION
[Symbol]	PROPOSED FULL DEPTH PAVEMENT
[Symbol]	PROPOSED RESURFACING
[Symbol]	PROPOSED CONCRETE
[Symbol]	PROPOSED DETECTABLE WARNING SURFACE
[Symbol]	REMOVAL OF EXISTING PAVEMENT/PROPOSED GREEN SPACE

TREE SUMMARY	
QUANTITY	TREE TYPE
NORTH SIDE	
3	FLOWERING (25')
SOUTH SIDE	
3	FLOWERING (25')
6	TOTAL

30% PRELIMINARY

7125 Ambassador Road, Suite 200  
Baltimore, Maryland 21244  
www.stvinc.com

DESIGN		
Landscape Architect	Date	Checked By:
K. MISNER	3/2021	S. YOUNG
Engineer	Date	Checked By:
K. MISNER	3/2021	S. YOUNG
Drawn by	Date	Checked By:

**Professional Certification.** I hereby certify that these documents were prepared or approved by me, and that I am a duly licensed professional engineer under the laws of the State of Maryland.

License No. 35321  
Expiration Date 01/06/2022

The Maryland-National Capital Park and Planning Commission  
Prince George's County Planning Department  
Community Planning Division  
www.mnppc.org  
(301) 952-3646

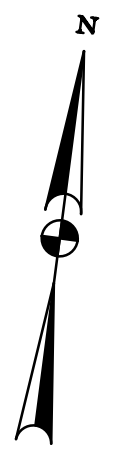
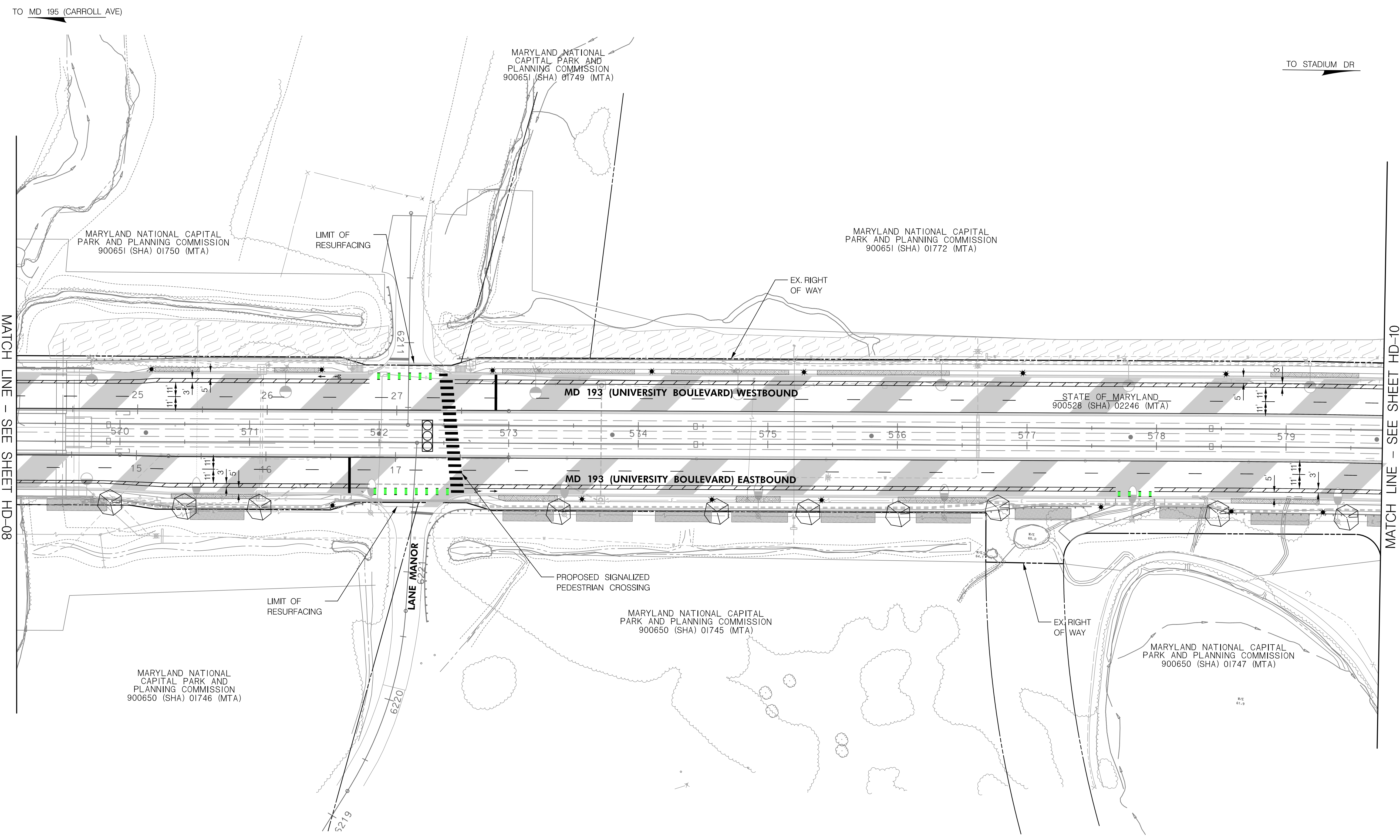
REVIEW AND APPROVAL	
Project Manager	Date
Construction Manager	Date
Park Manager	Date

ISSUED FOR PROCUREMENT ON _____		
REVISIONS		
Rev. No.	Date	Description

**NORTHERN GATEWAY SPACES PAMC PROJECT**  
MD 193 (UNIVERSITY BOULEVARD)  
TAKOMA LANGLEY STATION TO ADELPHI ROAD UMGC-UMD STATION

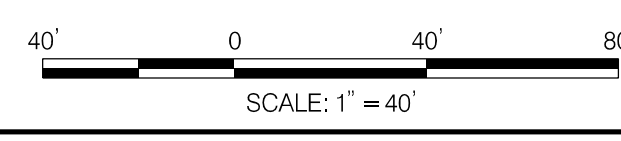
DWG. # **PS-08**  
SHT. # 9 of 12  
PLAN SHEET

FINAL SCANNED: PARK CODE: C10 PLAN SCANNED: Plotted By: Feldman, Aaron, 2/17/2016 3:28 PM, ----- C:\Users\Aaron.Feldman\Documents\Library\CAD Library\Title Blocks\Mod4



TO MD 195 (CARROLL AVE)

TO STADIUM DR



**LANDSCAPING LEGEND**

SYMBOL	DESCRIPTION	SYMBOL	DESCRIPTION
	EXISTING STORMWATER MANAGEMENT		PROPOSED GABION WALL W/BENCH
	EXISTING SHRUBS/HEDGES		PROPOSED STREET FURNITURE
	EXISTING MEDIAN PLANTING		PROPOSED VERTICAL SITE FEATURES
	EXISTING GRASS		PROPOSED VEGETATED TOWERS
	EXISTING REVEGETATION		PROPOSED FLOWERING TREE
	EXISTING TREES		PROPOSED SHADE TREE
	EXISTING BIKE RACK		PROPOSED MINOR SHADE TREE
			PROPOSED PEDESTRIAN LEVEL LIGHTING

**PATTERN LEGEND**

SYMBOL	DESCRIPTION
	PROPOSED FULL DEPTH PAVEMENT
	PROPOSED RESURFACING
	PROPOSED CONCRETE
	PROPOSED DETECTABLE WARNING SURFACE
	REMOVAL OF EXISTING PAVEMENT/PROPOSED GREEN SPACE

**TREE SUMMARY**

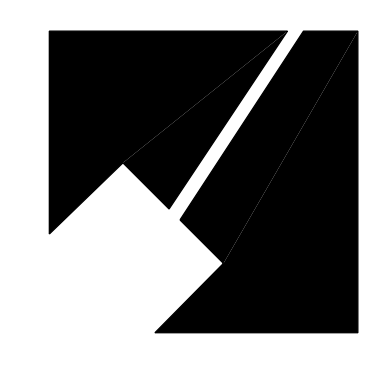
QUANTITY	TREE TYPE
NORTH SIDE	
0	FLOWERING (25')
SOUTH SIDE	
10	FLOWERING (25')
10	TOTAL

30% PRELIMINARY

**STV 100 Years**  
 7125 Ambassador Road, Suite 200  
 Baltimore, Maryland 21244  
 www.stvinc.com

DESIGN		
Landscape Architect	Date	Checked By:
Architect	Date	Checked By:
K. MISNER	3/2021	S. YOUNG
Engineer	Date	Checked By:
K. MISNER	3/2021	S. YOUNG
Drawn by	Date	Checked By:

**Professional Certification.** I hereby certify that these documents were prepared or approved by me, and that I am a duly licensed professional engineer under the laws of the State of Maryland.  
 License No. 35321  
 Expiration Date 01/06/2022



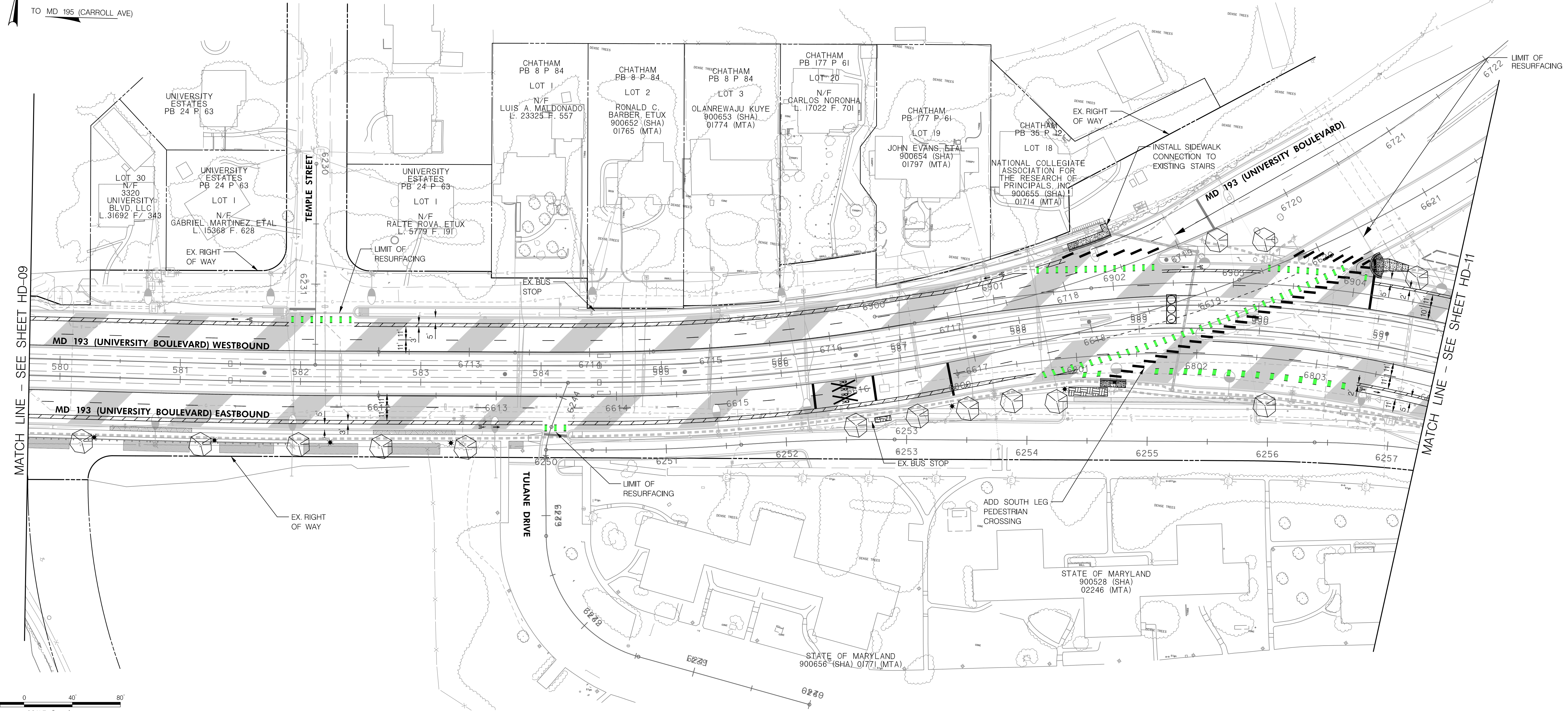
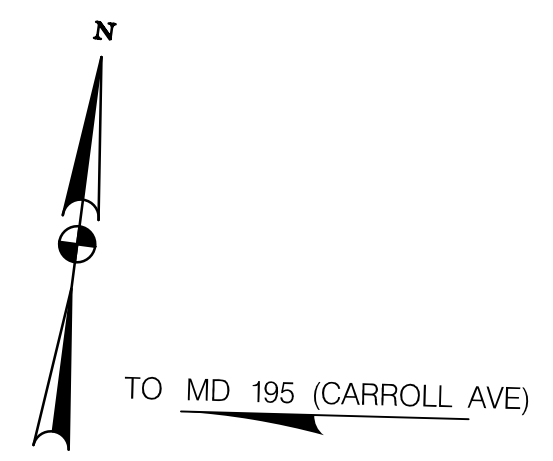
**The Maryland-National Capital Park and Planning Commission**  
 Prince George's County Planning Department  
 Community Planning Division  
 www.mncppc.org  
 (301) 952-3646

REVIEW AND APPROVAL	
Project Manager	Date
Construction Manager	Date
Park Manager	Date

ISSUED FOR PROCUREMENT ON _____		
REVISIONS		
Rev. No.	Date	Description

**NORTHERN GATEWAY SPACES PAMC PROJECT**  
**MD 193 (UNIVERSITY BOULEVARD)**  
 TAKOMA LANGLEY STATION TO ADELPHI ROAD UMGC-UMD STATION

**DWG. # PS-09**  
**SHT. # 10** of 12  
**PLAN SHEET**



LANDSCAPING LEGEND

SYMBOL	DESCRIPTION	SYMBOL	DESCRIPTION
[Symbol]	EXISTING STORMWATER MANAGEMENT	[Symbol]	PROPOSED GABION WALL W/BENCH
[Symbol]	EXISTING SHRUBS/HEDGES	[Symbol]	PROPOSED STREET FURNITURE
[Symbol]	EXISTING MEDIAN PLANTING	[Symbol]	PROPOSED VERTICAL SITE FEATURES
[Symbol]	EXISTING GRASS	[Symbol]	PROPOSED VEGETATED TOWERS
[Symbol]	EXISTING REVEGETATION	[Symbol]	PROPOSED FLOWERING TREE
[Symbol]	EXISTING TREES	[Symbol]	PROPOSED SHADE TREE
[Symbol]	EXISTING BIKE RACK	[Symbol]	PROPOSED MINOR SHADE TREE
		[Symbol]	PROPOSED PEDESTRIAN LEVEL LIGHTING

PATTERN LEGEND

SYMBOL	DESCRIPTION
[Symbol]	PROPOSED FULL DEPTH PAVEMENT
[Symbol]	PROPOSED RESURFACING
[Symbol]	PROPOSED CONCRETE
[Symbol]	PROPOSED DETECTABLE WARNING SURFACE
[Symbol]	REMOVAL OF EXISTING PAVEMENT/PROPOSED GREEN SPACE

TREE SUMMARY

QUANTITY	TREE TYPE
NORTH SIDE	
3	FLOWERING (25')
SOUTH SIDE	
11	FLOWERING (25')
14	TOTAL

30% PRELIMINARY

**STV** 100 Years  
 7125 Ambassador Road, Suite 200  
 Baltimore, Maryland 21244  
 www.stvinc.com

DESIGN		
Landscape Architect	Date	Checked By:
K. MISNER	3/2021	S. YOUNG
Engineer	Date	Checked By:
K. MISNER	3/2021	S. YOUNG
Drawn by	Date	Checked By:

**Professional Certification.** I hereby certify that these documents were prepared or approved by me, and that I am a duly licensed professional engineer under the laws of the State of Maryland.

License No. 35321  
 Expiration Date 01/06/2022

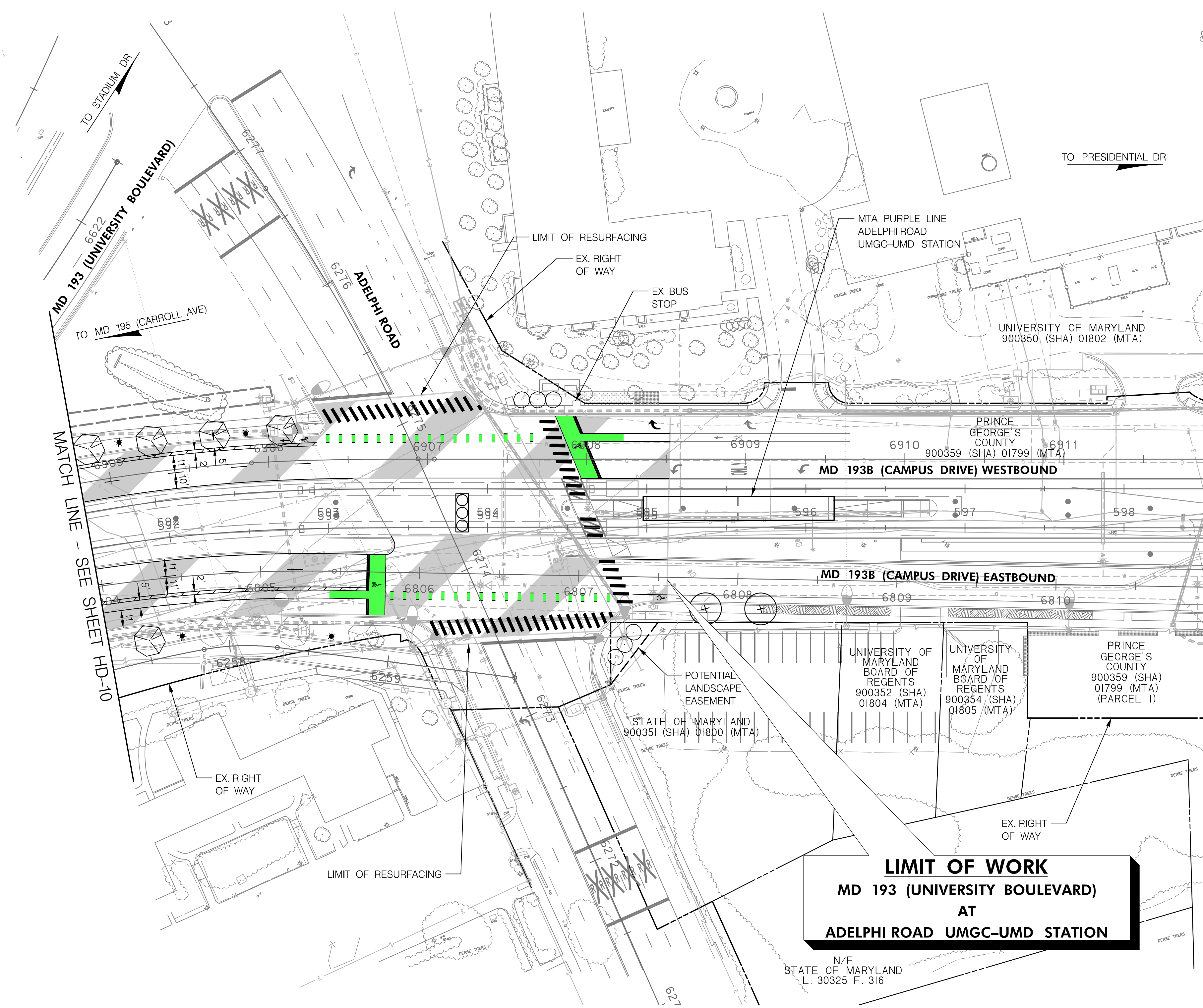
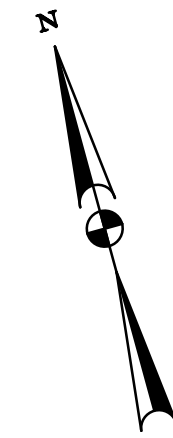
**The Maryland-National Capital Park and Planning Commission**  
 Prince George's County Planning Department  
 Community Planning Division  
 www.mnccppc.org  
 (301) 952-3646

REVIEW AND APPROVAL	
Project Manager	Date
Construction Manager	Date
Park Manager	Date

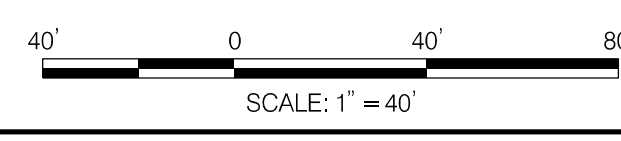
ISSUED FOR PROCUREMENT ON		
REVISIONS		
Rev. No.	Date	Description

**NORTHERN GATEWAY SPACES PAMC PROJECT**  
 MD 193 (UNIVERSITY BOULEVARD)  
 TAKOMA LANGLEY STATION TO ADELPHI ROAD UMGC-UMD STATION

DWG. # **PS-10**  
 SHT. # 11 of 12  
 PLAN SHEET



TREE SUMMARY	
QUANTITY	TREE TYPE
<b>NORTH SIDE</b>	
4	FLOWERING (25')
<b>SOUTH SIDE</b>	
1	FLOWERING (25')
2	SHADE
7	TOTAL



**LANDSCAPING LEGEND**

SYMBOL	DESCRIPTION	SYMBOL	DESCRIPTION
[Symbol]	EXISTING STORMWATER MANAGEMENT	[Symbol]	PROPOSED GABION WALL W/BENCH
[Symbol]	EXISTING SHRUBS/HEDGES	[Symbol]	PROPOSED STREET FURNITURE
[Symbol]	EXISTING MEDIAN PLANTING	[Symbol]	PROPOSED VERTICAL SITE FEATURES
[Symbol]	EXISTING GRASS	[Symbol]	PROPOSED VEGETATED TOWERS
[Symbol]	EXISTING REVEGETATION	[Symbol]	PROPOSED FLOWERING TREE
[Symbol]	EXISTING TREES	[Symbol]	PROPOSED SHADE TREE
[Symbol]	EXISTING BIKE RACK	[Symbol]	PROPOSED MINOR SHADE TREE
[Symbol]		[Symbol]	PROPOSED PEDESTRIAN LEVEL LIGHTING

**PATTERN LEGEND**

SYMBOL	DESCRIPTION
[Symbol]	PROPOSED FULL DEPTH PAVEMENT
[Symbol]	PROPOSED RESURFACING
[Symbol]	PROPOSED CONCRETE
[Symbol]	PROPOSED DETECTABLE WARNING SURFACE
[Symbol]	REMOVAL OF EXISTING PAVEMENT/PROPOSED GREEN SPACE

**LIMIT OF WORK**  
**MD 193 (UNIVERSITY BOULEVARD)**  
**AT**  
**ADELPHI ROAD UMGC-UMD STATION**

30% PRELIMINARY

**STV 100 Years**  
 7125 Ambassador Road, Suite 200  
 Baltimore, Maryland 21244  
 www.stvinc.com

DESIGN		
Landscape Architect	Date	Checked By:
Architect	Date	Checked By:
K. MISNER	3/2021	S. YOUNG
Engineer	Date	Checked By:
K. MISNER	3/2021	S. YOUNG
Drawn by	Date	Checked By:

**Professional Certification.** I hereby certify that these documents were prepared or approved by me, and that I am a duly licensed professional engineer under the laws of the State of Maryland.

License No. 35321  
 Expiration Date 01/06/2022

**The Maryland-National Capital Park and Planning Commission**  
 Prince George's County Planning Department  
 Community Planning Division  
 www.mnppc.org  
 (301) 952-3646

REVIEW AND APPROVAL	
Project Manager	Date
Construction Manager	Date
Park Manager	Date

ISSUED FOR PROCUREMENT ON _____		
REVISIONS		
Rev. No.	Date	Description

**NORTHERN GATEWAY SPACES PAMC PROJECT**  
**MD 193 (UNIVERSITY BOULEVARD)**  
**TAKOMA LANGLEY STATION TO ADELPHI ROAD UMGC-UMD STATION**

DWG. # **PS-11**  
 SHT. # 12 of 12  
**PLAN SHEET**